



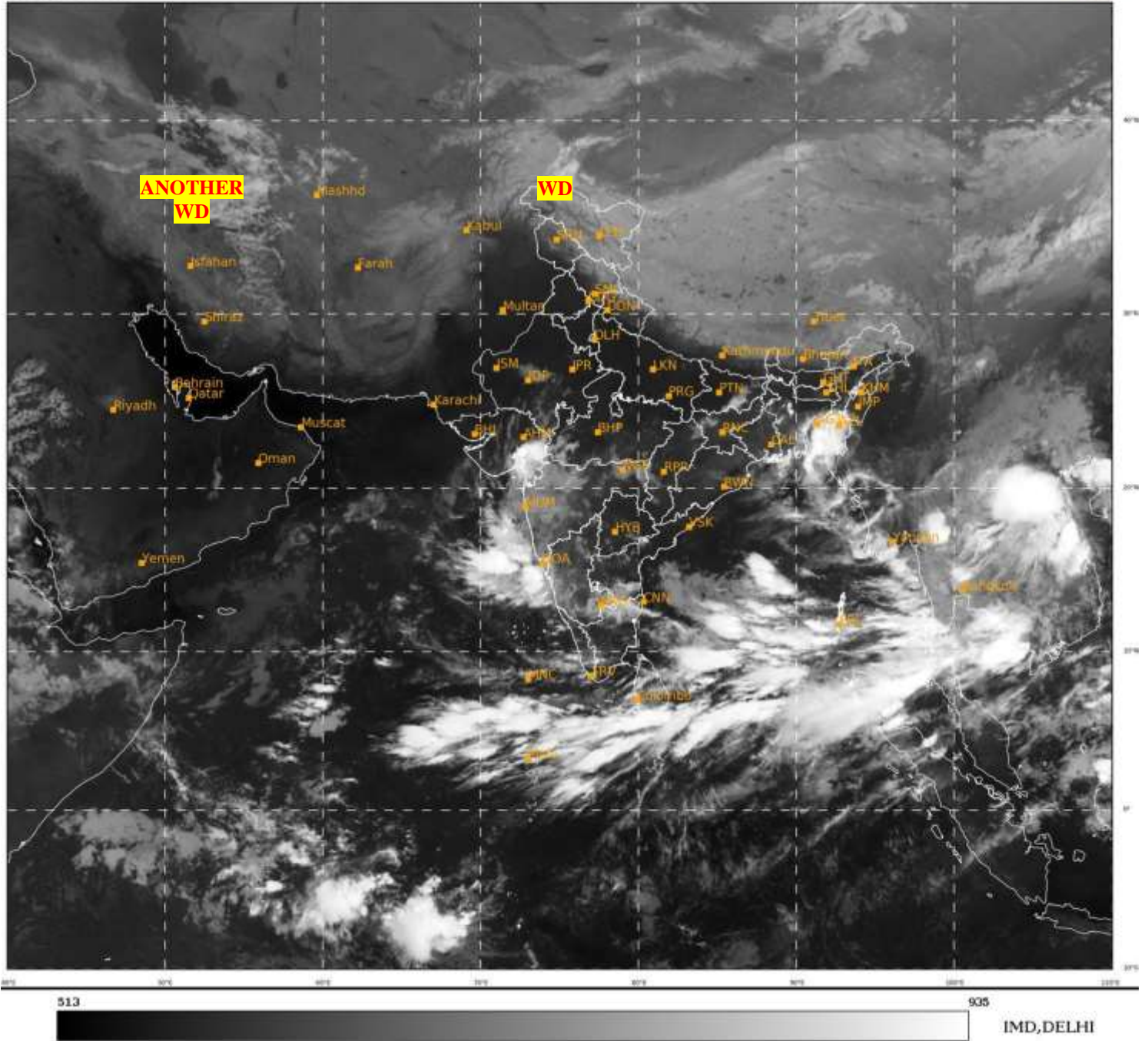
भारत मौसम विज्ञान विभाग  
पृथ्वी विज्ञान मंत्रालय  
India Meteorological Department  
Ministry of Earth Sciences



**SATELLITE BULLETIN BASED ON SATELLITE  
IMAGERIES AND PRODUCTS**  
**27.09.2023 TIME 0000 UTC**

SAT : INSAT-3D IMG  
IMG\_TIR1 10.8 um  
LIC Mercator

27-09-2023/(0000 to 0026) GMT  
27-09-2023/(0530 to 0556) IST



TCIN50 DEMS 270000

SATELLITE BULLETIN BASED ON INSAT-3D PIC OF 270000 UTC (.)

REGION COVERED BETWEEN LAT 50.0°N TO 35.0°S AND LONG 40.0°E TO 125.0°E (.)

**SALIENT FEATURES:-**

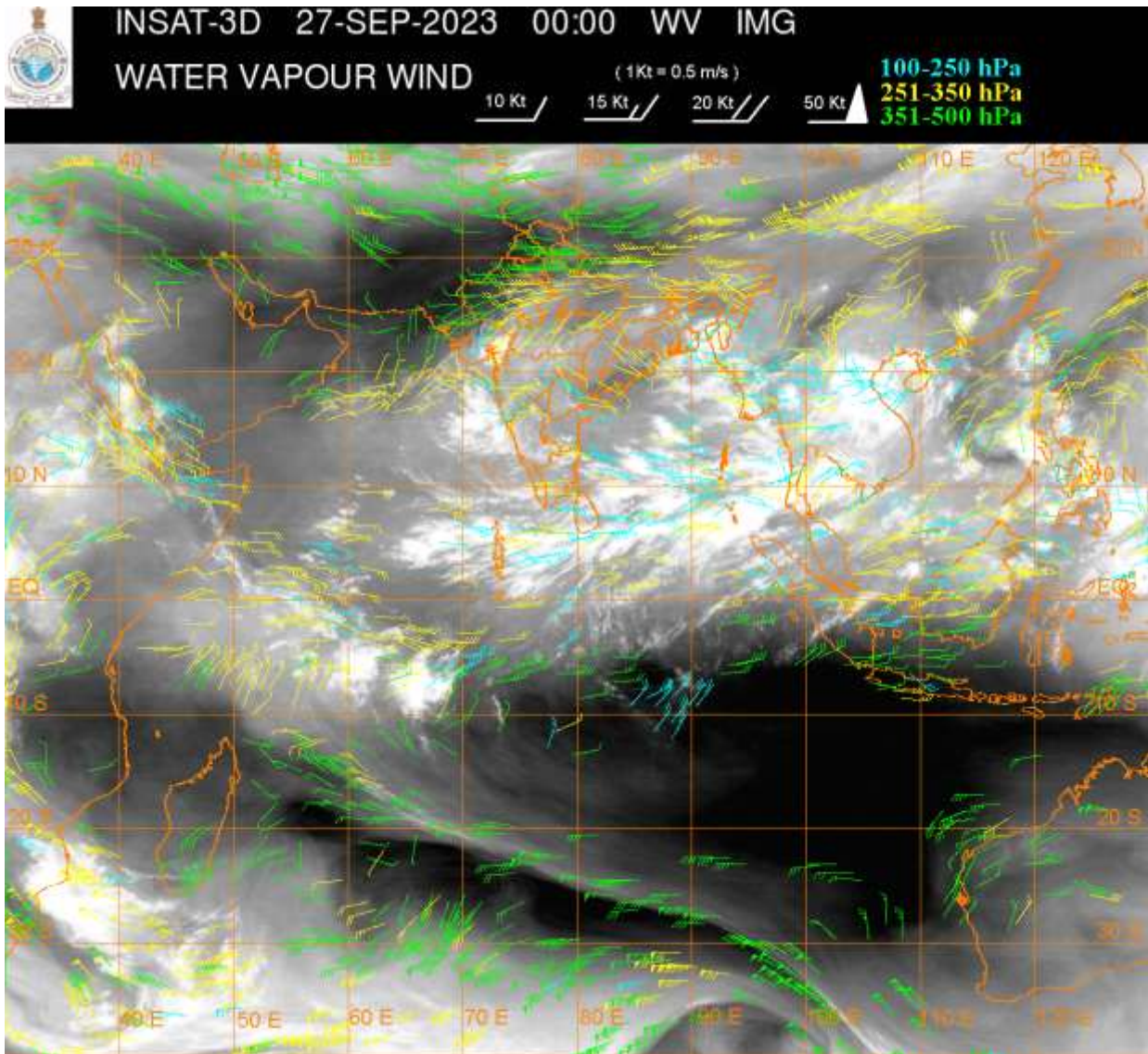
**WESTERN DISTURBANCE (WD):-**

SCT MULTILAYERED CLOUDS OVER NW LADAKH AND N/HOOD IN ASSW **WD** OVER THE AREA (.)

SCT MULTILAYERED CLOUDS OVER S CASPIAN SEA ADJ IRAN AND N/HOOD IN ASSW **ANOTHER WD** OVER THE AREA (.)

**THUNDERSTORM / CONVECTIVE ACTIVITY:-**

INTENSE THUNDERSTORM / CONVECTIVE ACTIVITY OBSERVED OVER SE GUJ TRIPURA MIZO & NICOBAR ILS (.)



**CLOUDS DESCRIPTION WITHIN INDIA:-**

**NORTH:-**

SCT LOW/MED CLOUDS WITH EMBDD ISOL MOD TO INT CONVTN OVER NW LADAKH AND ISOL WK TO MOD CONVTN OVER REST LADAKH (.) SCT LOW/MED CLOUDS OVER J&K HP UTRKND SW & E UP (.)

**EAST:-**

SCT TO BKN LOW/MED CLOUDS WITH EMBDD INT TO V INT CONVTN OVER TRP MIZO ADJ SE BD (MINIMUM **CTT MINUS 93 DEG CEL**) (.) SCT LOW/MED CLOUDS WITH EMBDD ISOL MOD TO INT CONVTN OVER SE BHR EXT S ASSAM S NAGA S MANI & REST BD AND ISOL WK TO MOD CONVTN OVER N JHRKND CHTGH E ASSAM ARUPR N NAGA (.) SCT LOW/MED CLOUDS OVER REST BHR REST JHRKND ORS GWB N SHWB SKM REST NE STATES (.)

**WEST:-**

SCT TO BKN LOW/MED CLOUDS WITH EMBDD INT TO V INT CONVTN OVER SE GUJ GULF OF CAMBAY (MINIMUM **CTT MINUS 86 DEG CEL**) (.) SCT LOW/MED CLOUDS WITH EMBDD ISOL WK TO MOD CONVTN OVER S RAJ MP REST GUJ MAHA GOA (.) SCT LOW/MED CLOUDS OVER REST RAJ (.)

**SOUTH:-**

SCT LOW/MED CLOUDS WITH EMBDD INT TO V INT CONVTN OVER NICOBAR ILS (MINIMUM **CTT MINUS 84 DEG CEL**) (.) SCT LOW/MED CLOUDS WITH EMBDD MOD TO INT CONVTN OVER S RYLSM S COTL AP N TN ANDAMAN ILS AND ISOL WK TO MOD CONVTN OVER KRNTK S TLNGN N RYLSM KER S TN LKSDP ILS (.) SCT LOW/MED CLOUDS OVER N TLNGN N COTL AP (.)

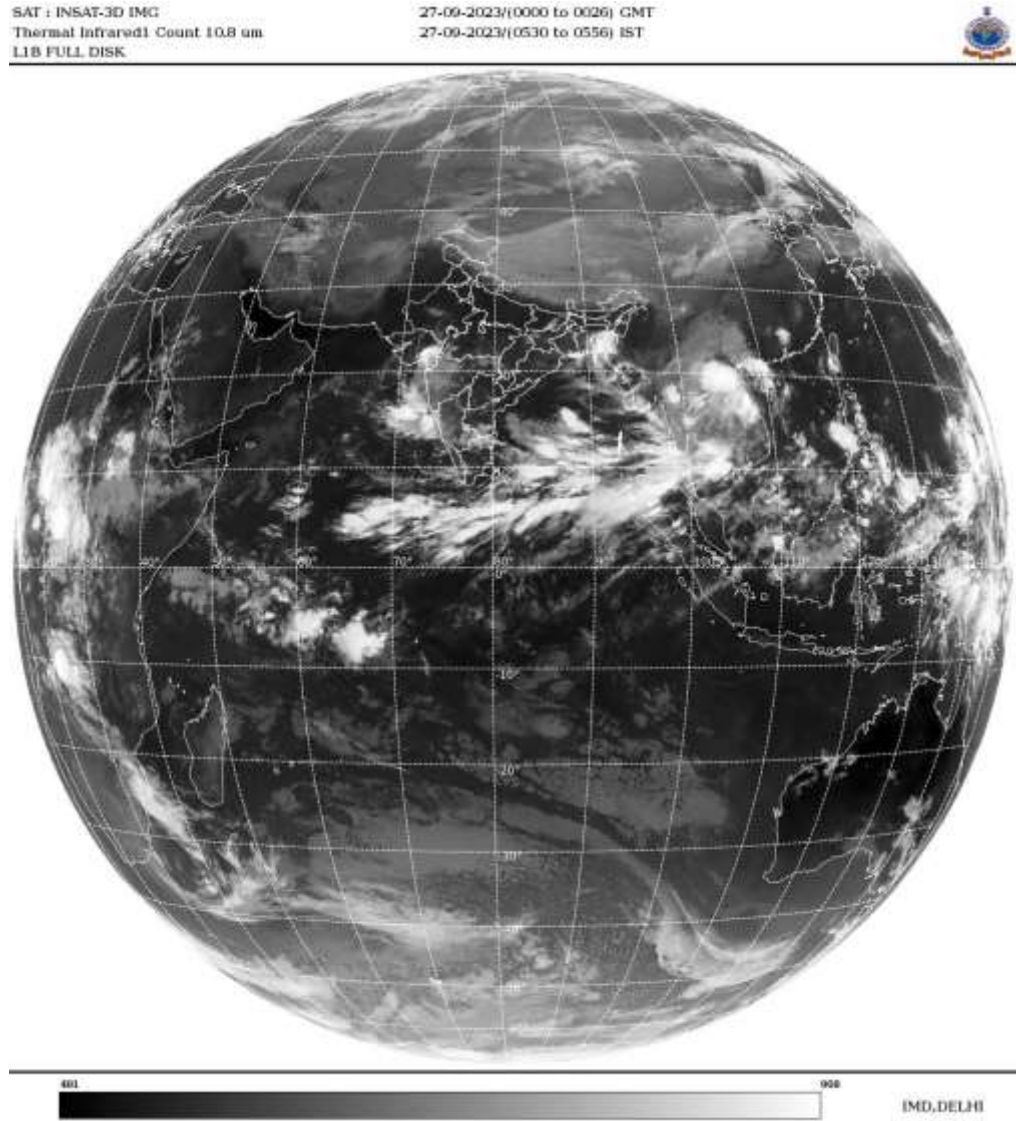
**ARABIAN SEA:-**

SCT LOW/MED CLOUDS WITH EMBDD INT TO V INT CONVTN OVER EC ARSEA OFF MAHA ADJ KRNTK COASTS (.) SCT LOW/MED CLOUDS WITH EMBDD ISOL MOD TO INT CONVTN OVER SOUTH ARSEA COMORIN AREA (.)

**BAY OF BENGAL & ANDAMAN SEA:-**

**SCT TO BKN LOW/MED CLOUDS WITH EMBDD INT TO V INT CONVTN OVER NE BAY C PARTS OF CENTRAL & SOUTH BAY ANDAMAN SEA GULF OF MARTABAN AND TENASSERIM COAST  
(.) SCT LOW/MED CLOUDS WITH EMBDD WK TO MOD CONVTN OVER REST BAY (.)**

**CLOUDS DESCRIPTION OUTSIDE INDIA:-**



**SCT LOW/MED CLOUDS WITH EMBDD MOD TO INT CONVTN OVER SRI LANKA MALDIVES TIBET CHINA S MYANMAR THAILAND GULF OF THAILAND CAMBODIA LAOS VIETNAM GULF OF TONKIN HAINAN SUMATRA STR OF MALACCA MALAYSIA BORNEO SOUTH CHINA SEA PHILIPPINES SULU SEA AND OVER INDIAN OCEAN BET LAT 5.0N TO 10.0S LONG 43.0E TO 100.0E (.)**

**TOO 27/0630 HRS IST=**

**NNNN**

**LEGEND:-**

|                           |              |  |
|---------------------------|--------------|--|
| <b>REGION</b>             | <b>NORTH</b> | <b>J&amp;K HP PJB HARY DLH UP UTRKND</b>                         |
|                           | <b>EAST</b>  | <b>BHR JHRKND CHTGH OR WB SKM<br/>NORTH- EAST STATES</b>         |
|                           | <b>WEST</b>  | <b>RAJ MP GUJ MAHA GOA</b>                                       |
|                           | <b>SOUTH</b> | <b>TLNGN AP KRNTK KER TN LKSDP<br/>ANDAMAN &amp; NICOBAR ILS</b> |
| <b>CLOUD DISTRIBUTION</b> | <b>ISOL</b>  | <b>ISOLATED (LESS THAN 25%)</b>                                  |
|                           | <b>SCT</b>   | <b>SCATTERED (25 TO 50%)</b>                                     |
|                           | <b>BKN</b>   | <b>BROKEN (51 TO 75%)</b>  |
|                           | <b>SLD</b>   | <b>SOLID (GREATER THAN 75%)</b>                                  |

| <b>CLOUDS TOP TEMPERATURE</b>  | <b>CTT</b>                       | <b>CLOUD TOP TEMPERATURE</b>                                |
|--|----------------------------------|---|
| <b>CONVECTION</b>  | <b>WK CONV TN</b>                | <b>WEAK CONVECTION<br/>(CTT GREATER THAN -25°C)</b>         |
|  | <b>MOD CONV TN</b>               | <b>MODERATE CONVECTION<br/>(CTT BETWEEN -25°C TO -40°C)</b> |
|  | <b>INT CONV TN</b>               | <b>INTENSE CONVECTION<br/>(CTT BETWEEN -41°C TO -70°C)</b>  |
|  | <b>V INT CONV TN</b>             | <b>VERY INTENSE CONVECTION<br/>(CTT LESS THAN -70°C)</b>    |
| <b>METEOROLOGICAL SUB- DIVISIONS, STATES &amp; UNION TERRITORIES</b> | <b>ARUPR</b>                     | <b>ARUNACHAL PRADESH</b>                                    |
|  | <b>BHR</b>                       | <b>BIHAR</b>  |
|  | <b>CHTGH</b>                     | <b>CHHATTISGARH</b>   |
|  | <b>COTL AP</b>                   | <b>COASTAL ANDHRA PRADESH</b>                               |
|  | <b>COTL KRNTK</b>                | <b>COASTAL KARNATAKA</b>                                    |
|  | <b>COTL ORS</b>                  | <b>COASTAL ORISSA</b>                                       |
|  | <b>GUJ</b>                       | <b>GUJARAT</b>  |
|  | <b>GWB</b>                       | <b>GANGETIC WEST BENGAL</b>                                 |
|  | <b>HARY</b>                      | <b>HARYANA</b>  |
|  | <b>DLH</b>                       | <b>DELHI</b>  |
|  | <b>HP</b>                        | <b>HIMACHAL PRADESH</b>                                     |
|  | <b>J&amp;K</b>                   | <b>JAMMU AND KASHMIR</b>                                    |
|  | <b>JHRKND</b>                    | <b>JHARKHAND</b>  |
|  | <b>KER</b>                       | <b>KERALA</b>   |
|  | <b>KKN</b>                       | <b>KONKAN</b>   |
|  | <b>LKSDP</b>                     | <b>LAKSHADWEEP</b>  |
|  | <b>M MAHA</b>                    | <b>MADHYA MAHARASHTRA</b>                                   |
|  | <b>MAHA</b>                      | <b>MAHARASHTRA</b>  |
|  | <b>MANI</b>                      | <b>MANIPUR</b>  |
|  | <b>MEGHA</b>                     | <b>MEGHALAYA</b>  |
|  | <b>MIZO</b>                      | <b>MIZORAM</b>  |
|  | <b>MP</b>                        | <b>MADHYA PRADESH</b>                                       |
|  | <b>MRTHWD</b>                    | <b>MARATHWADA</b>   |
|  | <b>NAGA</b>                      | <b>NAGALAND</b>   |
|  | <b>N COTL AP</b>                 | <b>NORTH COASTAL ANDHRA PRADESH</b>                         |
|  | <b>NIK</b>                       | <b>NORTH INTERIOR KARNATAKA</b>                             |
|  | <b>ORS</b>                       | <b>ORISSA</b>   |
|  | <b>PJB</b>                       | <b>PUNJAB</b>   |
| <b>RAJ</b>   | <b>RAJASTHAN</b>                 |   |
| <b>RYLSM</b>   | <b>RAYALASEEMA</b>               |   |
| <b>SAU &amp; KUTCH</b>   | <b>SAURASHTRA &amp; KUTCH</b>    |   |
| <b>SHWB</b>  | <b>SUB-HIMALAYAN WEST BENGAL</b> |   |
| <b>SIK</b>   | <b>SOUTH INTERIOR KARNATAKA</b>  |   |
| <b>SKM</b>   | <b>SIKKIM</b>                    |   |
| <b>TLNGN</b>   | <b>TELANGANA</b>                 |   |
| <b>TN</b>  | <b>TAMIL NADU</b>                |   |
| <b>TRP</b>   | <b>TRIPURA</b>                   |   |
| <b>UP</b>  | <b>UTTAR PRADESH</b>             |   |

|                      |               |                                  |
|----------------------|---------------|----------------------------------|
|                      | <b>UTRKND</b> | <b>UTTARAKHAND</b>               |
|                      | <b>VID</b>    | <b>VIDHARBHA</b>                 |
|                      | <b>SHWB</b>   | <b>SUB HIMALAYAN WEST BENGAL</b> |
|                      | <b>GWB</b>    | <b>GANGETIC WEST BENGAL</b>      |
|                      | <b>ARSEA</b>  | <b>ARABIAN SEA</b>               |
|                      | <b>ILS</b>    | <b>ISLANDS</b>                   |
| <b>MISCELLANEOUS</b> | <b>ASSW</b>   | <b>IN ASSOCIATION WITH</b>       |
|                      | <b>ASSTD</b>  | <b>ASSOCIATED</b>                |
|                      | <b>LLC</b>    | <b>LOW LEVEL CIRCULATION</b>     |
|                      | <b>EMBDD</b>  | <b>EMBEDDED</b>                  |
|                      | <b>N/HOOD</b> | <b>NEIGHBOURHOOD</b>             |
|                      | <b>EXT</b>    | <b>EXTREME</b>                   |